

ARTWORK APPROVAL FORM

ORDER DETAILS

ORDER NUMBER: X  
ITEM CODE: SOPUS4  
QUANTITY: X  
ELASTIC BAND: X  
RIBBON: X

COVER (A1/A2)

TECHNIQUE: FULL COLOUR / DEBOSSED /  
DEBOSSED + FULL COLOUR  
SIZE: X  
PEN HOLDER: NONE  
PU CODE: X

INNER COVER (B1/B2 - C1/C2)

TECHNIQUE: X  
COLOUR: X  
SIZE: AS ARTWORK  
X: X  
X: X

SHEETS (D1/D2)

TECHNIQUE: X  
COLOUR: X  
SIZE: AS ARTWORK  
PAPER TYPE: LINES + LOGO (1 COL) /  
SQUARES + LOGO (1 COL) /  
CUSTOM DESIGN (1 COL) /  
CUSTOM DESIGN (FULL COLOUR)

X

X:

X:

X:

X:

X:

X:

X

X:

X:

X:

X:

X:



SCALE 1:4

GENERAL COMMENTS:

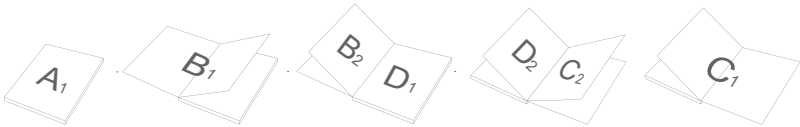
THE FINAL OUTCOME OF THE COLOURS WILL BE AFFECTED DEPENDING OF THE LAMINATION TYPE.

DUE TO THE NATURE OF FULL COLOUR PRINTING THE OUTCOME OF THE FINAL COLOUR RESULT CAN BE SLIGHTLY DIFFERENT IN A REAL SAMPLE.

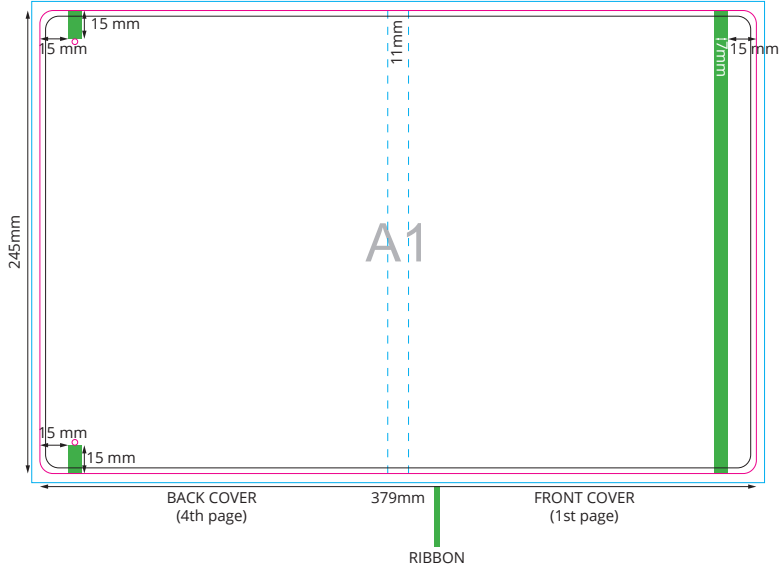
WATERMARK EFFECT MIGHT BE DIFFERENT FROM EXPECTATION.THE FINAL EFFECT CAN BE TOO DARK OR TOO BRIGHT.

ATTENTION:

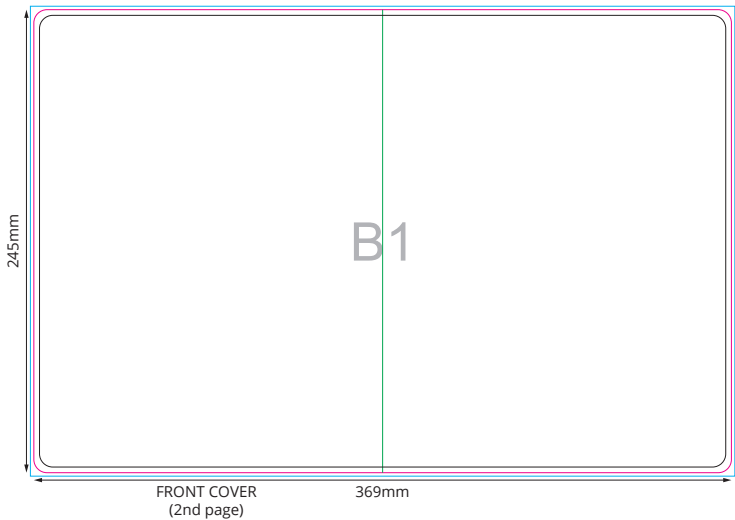
SKETCH OF COMPONENT PLACEMENT



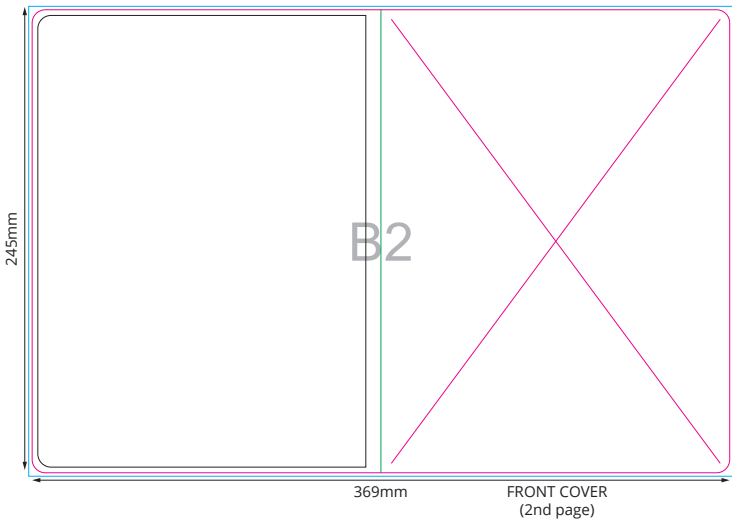
COVER



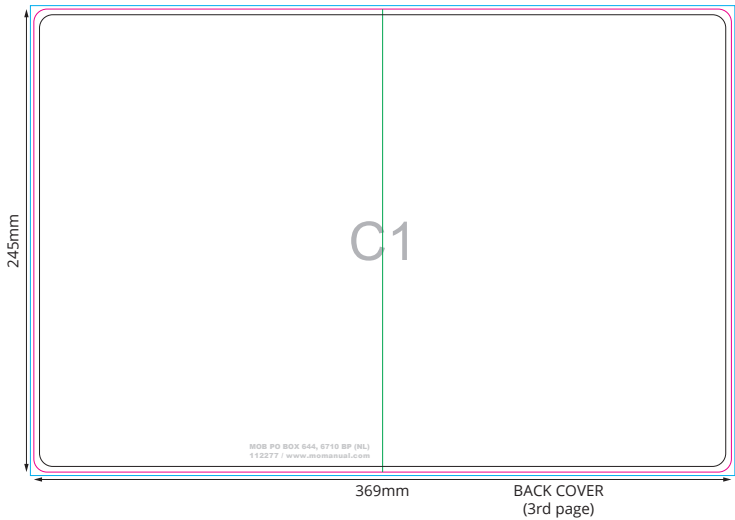
TOP ENDSHEET - FRONT



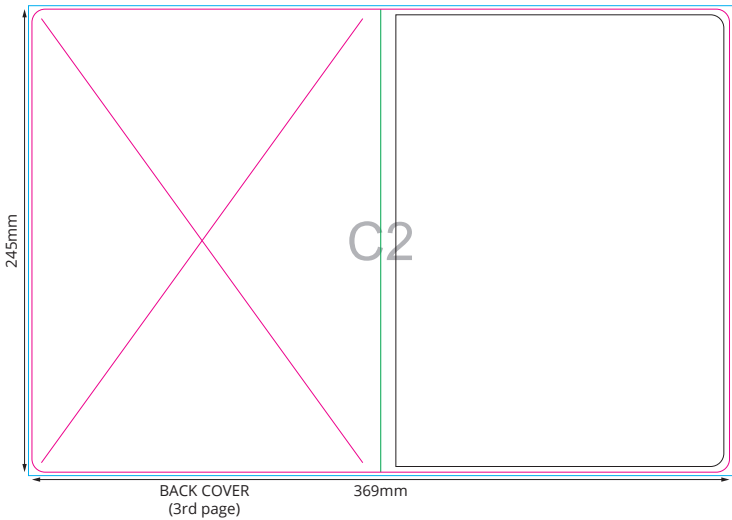
TOP ENDSHEET - BACK



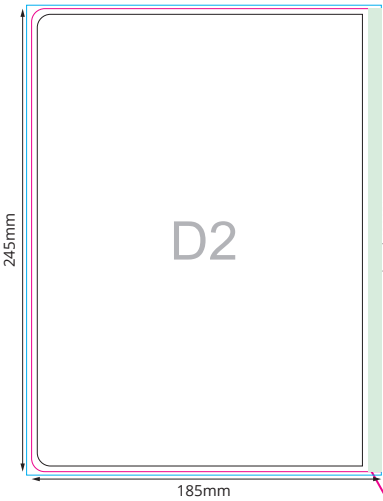
BOTTOM ENDSHEET - FRONT



BOTTOM ENDSHEET - BACK



PUR NOTEPAD - BACK



PUR NOTEPAD - FRONT



80 SHEETS

First page is glued to the inner cover spine. Then from the binding edge.  
Last page is glued to the inner cover spine. Then from the binding edge.

Key:

—Finished component size

—Bleed area. In case of bleed imprint, please extend it until blue line

—Safe print area. Keep all important text and graphics within this area

—Solid Board

—Axis of the Crease

—Visual spine edge

yourChoice



A1

B1

B2

C1

C2

D1

D2