

ARTWORK APPROVAL FORM

ORDER DETAILS

ORDER NUMBER: X  
ITEM CODE: SNS250-XD  
QUANTITY: X  
X: X  
X: X

PAPER DETAILS

COLOUR: WHITE  
TYPE: STANDARD  
WEIGHT: 80 GR  
LAMINATION: SHINY / MATT  
X: X

OUTER COVER (A1)

TECHNIQUE: X  
COLOUR: CMYK  
SIZE: AS ARTWORK  
X: X  
X: X

INNER COVER (A2)

TECHNIQUE: X  
COLOUR: X  
SIZE: AS ARTWORK  
X: X  
X: X

STICKY NOTES (B1)

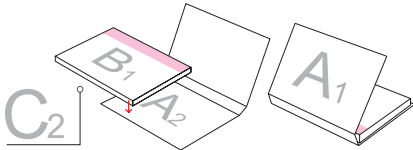
TECHNIQUE: X  
COLOUR: X  
SIZE: AS ARTWORK  
X: X  
X: X



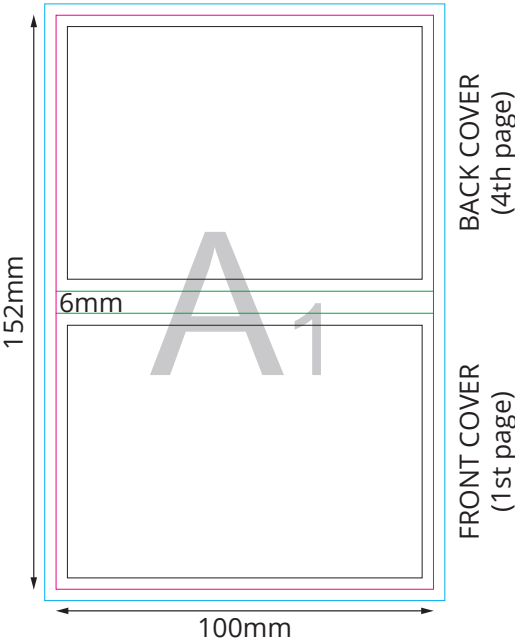
SCALE 1:2

GENERAL COMMENTS:

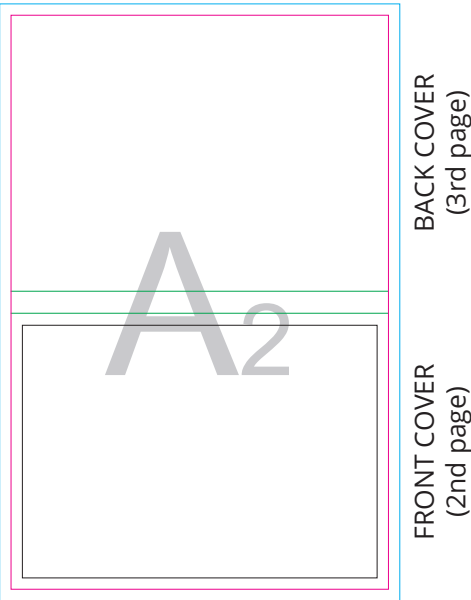
THE FINAL OUTCOME OF THE COLOURS WILL BE AFFECTED DEPENDING OF THE LAMINATION TYPE.  
DUE TO THE NATURE OF FULL COLOUR PRINTING THE OUTCOME OF THE FINAL COLOUR RESULT CAN BE SLIGHTLY DIFFERENT IN A REAL SAMPLE.  
WATERMARK EFFECT MIGHT BE DIFFERENT FROM EXPECTATION.THE FINAL EFFECT CAN BE TOO DARK OR TOO BRIGHT.  
ATTENTION:



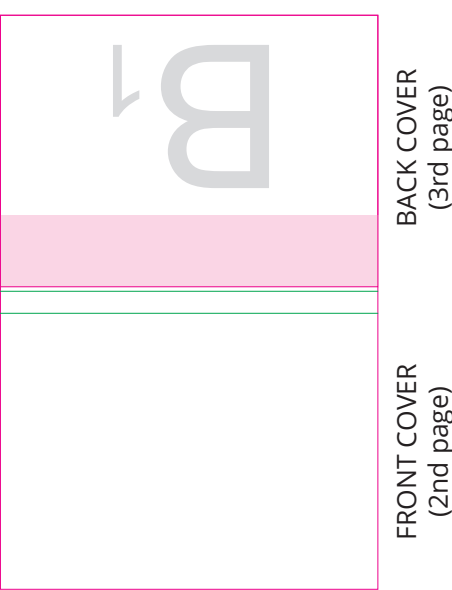
OUTER COVER



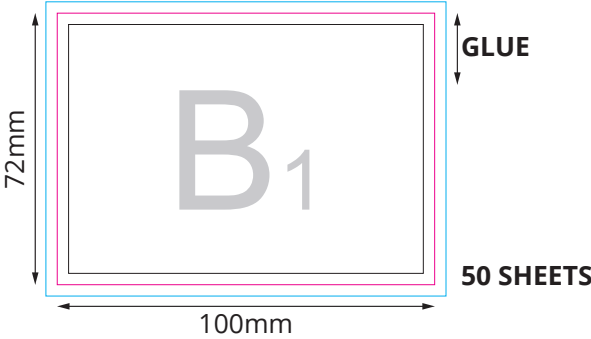
INNER COVER



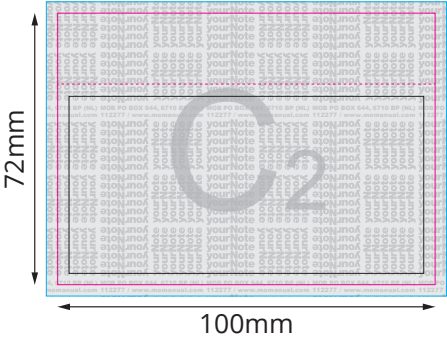
SKETCH OF COMPONENTS' PLACEMENT



STICKY NOTES



BOTTOM SHEET



Key:

- Finished component size
- Bleed area. In case of bleed imprint, please extend it until blue line
- Safe print area. Keep all important text and graphics within this area
- Solid Board
- ....Edge of Solid Board
- ....Visual Spine Edge
- ....Axis of the Product

yourChoice



A<sub>1</sub>

A<sub>2</sub>



The image features a central light gray rectangle containing the text "B<sub>1</sub>". This rectangle is enclosed by a magenta border, which is further enclosed by a blue border. The entire composition is set against a background of a light gray grid.

$B_1$

710 BP (NL) MOB PO BOX 644, 6710 BP (NL) MOB PO BOX 644, 6710 BP (NL) MOB PO BOX 644, 6710 BP (NL) MOB PO BOX  
manual.com 112277 / www.momanual.com 112277 / www.momanual.com 112277 / www.momanual.com 112277 / www