

ARTWORK APPROVAL FORM

ORDER DETAILS

ORDER NUMBER: X
ITEM CODE: NOTEG5
QUANTITY: X
ELASTIC BAND: X
RIBBON: X
PEN HOLDER: NONE

COVER (A1/A2)

TECHNIQUE: X
COLOUR: CMYK
SIZE: AS ARTWORK
MATERIAL: GRASS PAPER
X: X

INNER COVER (B1/B2 - C1/C2)

TECHNIQUE: X
COLOUR: X
SIZE: AS ARTWORK
X: X
X: X

SHEETS (D1/D2)

TECHNIQUE: X
COLOUR: X
SIZE: AS ARTWORK
PAPER TYPE: ST. LINED
ST. SQUARED
CUSTOM DESIGN

X

X:

X:

X:

X:

X:

X

X:

X:

X:

X:



SCALE 1:4

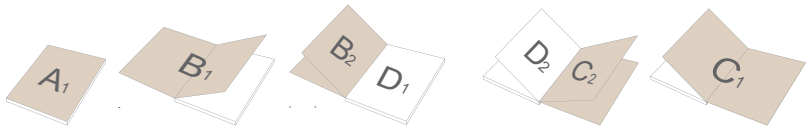
GENERAL COMMENTS:

DUE TO THE NATURE OF FULL COLOUR PRINTING THE OUTCOME OF THE FINAL COLOUR RESULT CAN BE SLIGHTLY DIFFERENT IN A REAL SAMPLE.
WATERMARK EFFECT MIGHT BE DIFFERENT FROM EXPECTATION.THE FINAL EFFECT CAN BE TOO DARK OR TOO BRIGHT.

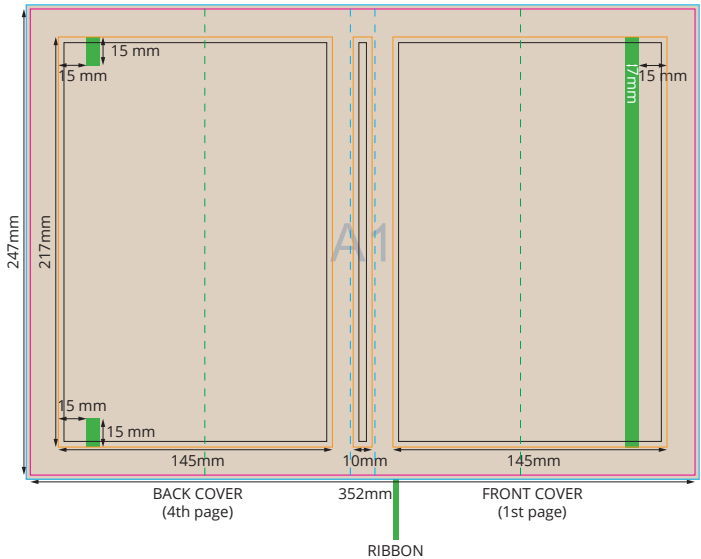
ATTENTION:

DUE THE SURFACE OF ECO ITEM (BROWN PAPER) THE COLOUR RESULT MIGHT BE DIFFER FROM EXPECTATION, ESPECIALLY FOR VERY BRIGHT COLOURS.
DUE THE SURFACE MATERIAL OF THIS ITEM WHEN A FULL EDGE TO EDGE PRINT IS REQUIRED THERE IS A RISK OF SOME INK BEING REMOVED DURING THE ASSEMBLY OF THE OUTER NOTEBOOK COVERS. IT IS RECOMMENDED TO KEEP PRINTING INSIDE THE INDICATED SAFE PRINT AREA.

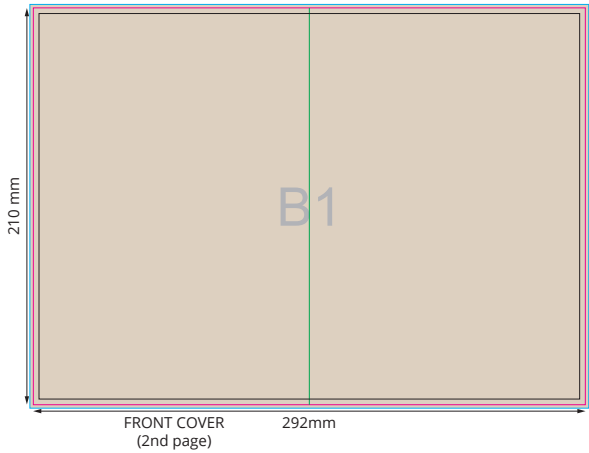
SKETCH OF COMPONENT PLACEMENT



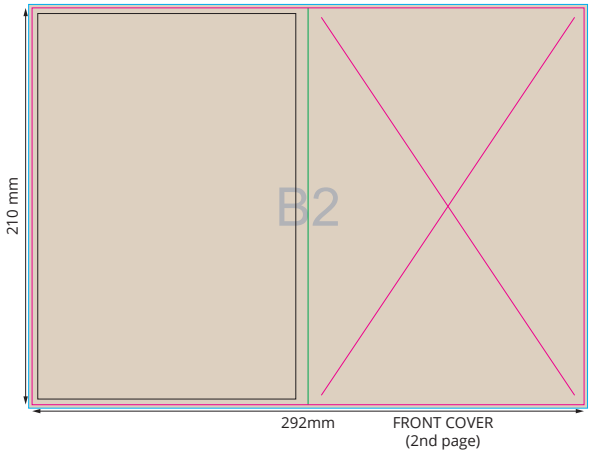
OUTER COVER



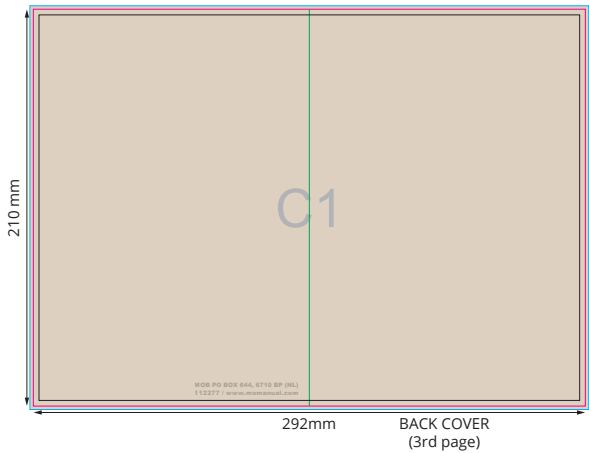
TOP ENDSHEET - FRONT



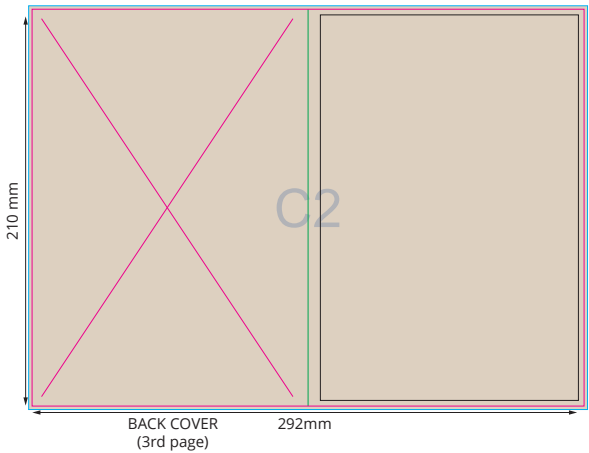
TOP ENDSHEET - BACK



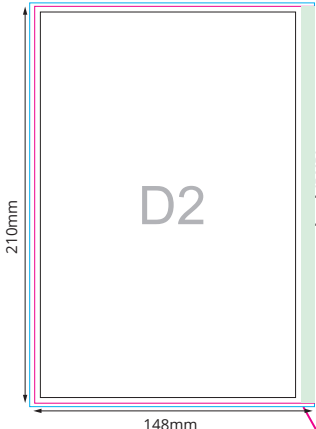
BOTTOM ENDSHEET - FRONT



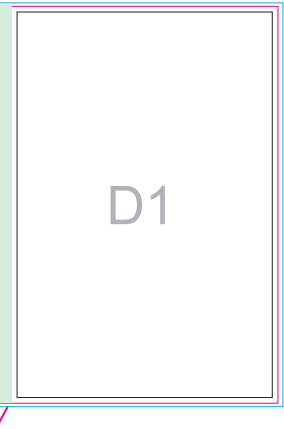
BOTTOM ENDSHEET - BACK



PUR NOTEPAD - BACK



PUR NOTEPAD - FRONT



80 SHEETS

Notes:
This page is placed in the inner cover against the back the binding margin.
Last page is placed in the inner cover against the back the binding margin.

Key:

- Finished component size
- Bleed area. In case of bleed imprint, please extend it until blue line
- Safe print area. Keep all important text and graphics within this area
- Solid Board
- Axis of the Crease
- Visual spine edge

yourChoice



A1

B1

B2



C1

C2



D1

D2