

ARTWORK APPROVAL FORM

ORDER DETAILS

ORDER NUMBER: X
ITEM CODE: NOPCC5
QUANTITY: X
ELASTIC BAND: NONE
X: X

OUTER COVER (A1)

TECHNIQUE: OFFSET
COLOUR: X
SIZE: X
MATERIAL: COFFEE PAPER

INNER COVER (A2)

TECHNIQUE: X
COLOUR: X
SIZE: AS ARTWORK
X: X
X: X

SHEETS (B1/B2)

TECHNIQUE: X
COLOUR: X
SIZE: AS ARTWORK
PAPER TYPE: ST. LINED
ST. SQUARED
CUSTOM DESIGN

X
X: X
X: X
X: X
X: X
X: X



SCALE 1:4

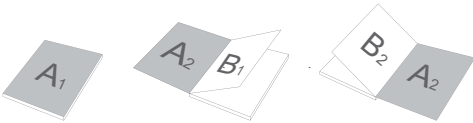
GENERAL COMMENTS:

DUE TO THE NATURE OF FULL COLOUR PRINTING THE OUTCOME OF THE FINAL COLOUR RESULT CAN BE SLIGHTLY DIFFERENT IN A REAL SAMPLE.
WATERMARK EFFECT MIGHT BE DIFFERENT FROM EXPECTATION.THE FINAL EFFECT CAN BE TOO DARK OR TOO BRIGHT.

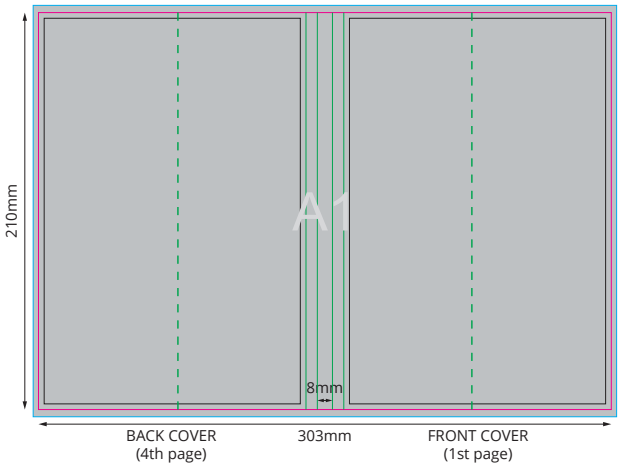
ATTENTION:

ALL IMPRINTS ON UNCOATED PAPER CAN BE A LITTLE SHINY.
DUE THE SURFACE OF ECO ITEM (COFFE PAPER) THE COLOUR RESULT MIGHT BE DIFFER FROM EXPECTATION, ESPECIALLY FOR VERY BRIGHT COLOURS.
DUE THE MATERIAL AND PRODUCTION PROCESS ECO PRODUCTS DON'T INCLUDE ANY FINISHING.
DUE THE SURFACE MATERIAL OF THIS ITEM WHEN A FULL EDGE TO EDGE PRINT IS REQUIRED THERE IS A RISK OF SOME INK BEING REMOVED DURING THE ASSEMBLY OF THE OUTER NOTEBOOK COVERS. IT IS RECOMMENDED TO KEEP PRINTING INSIDE THE INDICATED SAFE PRINT AREA.
THE FINAL RESULT OF GRADIENTS COLOURS MIGHT BE DIFFER FROM EXPECTATION.

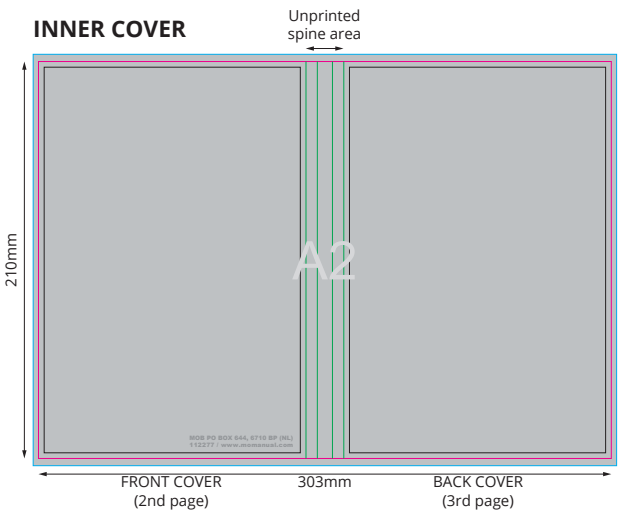
SKETCH OF COMPONENT PLACEMENT



OUTER COVER

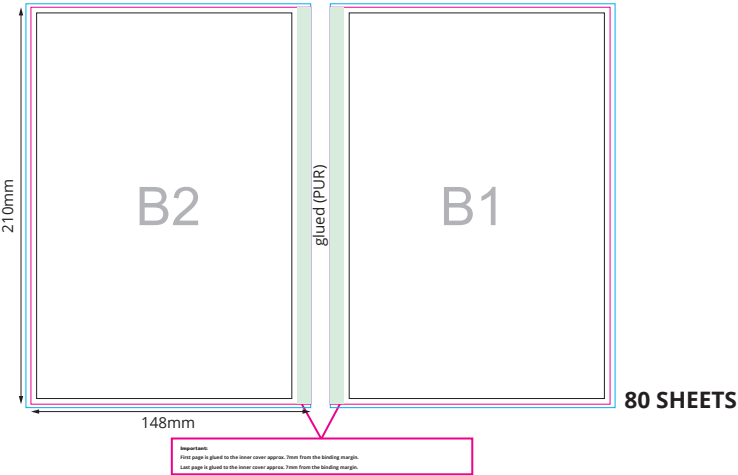


INNER COVER



PUR NOTEPAD - BACK

PUR NOTEPAD - FRONT



80 SHEETS

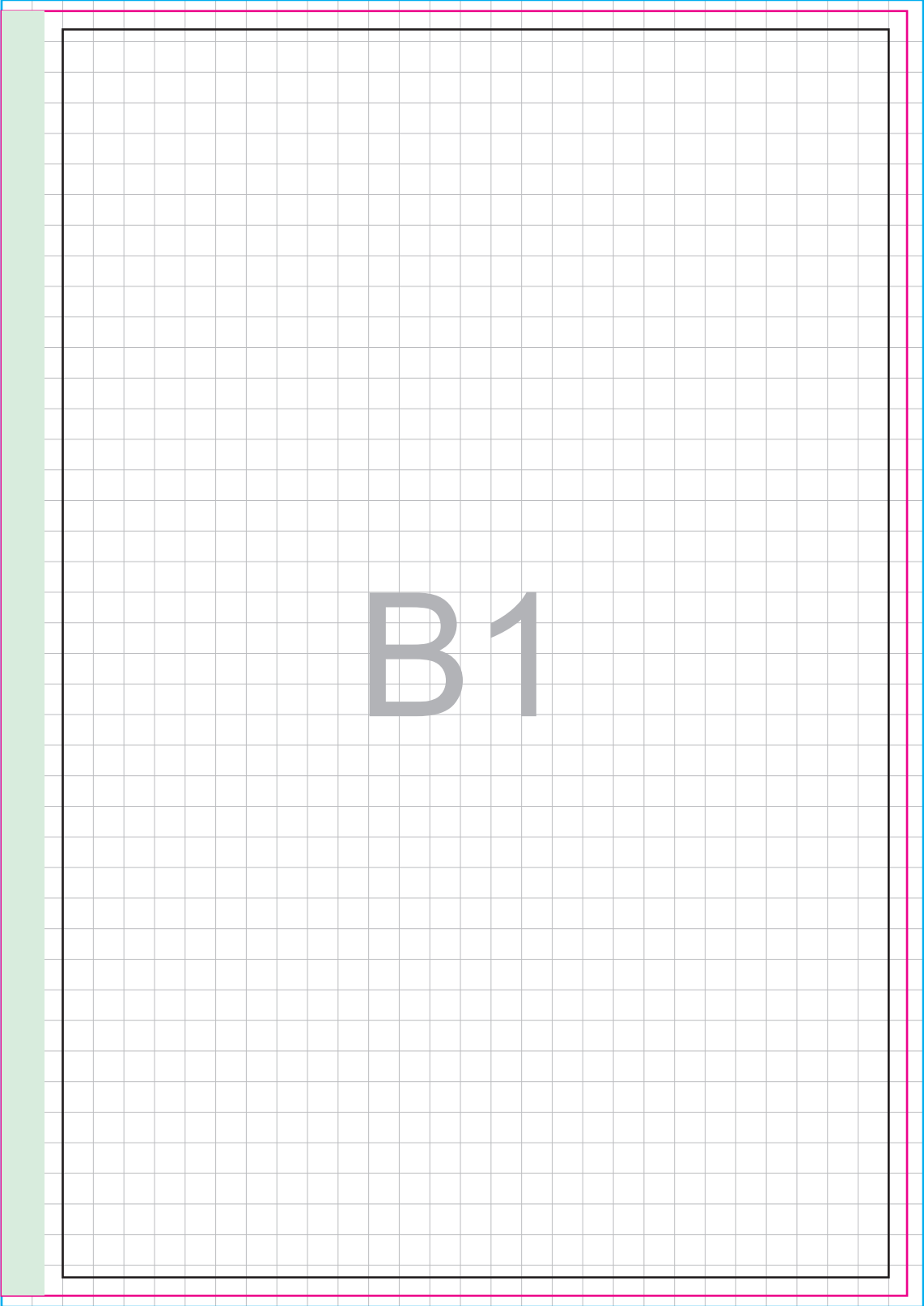
Key:

- Finished component size
- Bleed area. In case of bleed imprint, please extend it until blue line
- Safe print area. Keep all important text and graphics within this area
- Solid Board
- Axis of the Crease
- Visual spine edge

yourChoice

A1

A2



B1

B2